

Rolling Hills Public Charter School
Monday Notes - Monday, March 15, 2010

. Parent Teacher Conferences

- **March 15 - 19, 2010**
- **Times: 3:00 pm - 6:00 pm**
- **Scheduled times for grades K-5**
- ***Drop-in for grades 6, 7, and 8***

. PFA

- **K-4 will be doing a mini-concert the evening of 3/18/2010 at the PFA meeting. The meeting will start @ 6:30 pm.**

RHPCS Calendar Notes

Calendar

Monday, March 15

Tuesday, March 16

Wednesday, March 17

Thursday, March 18

Friday, March 19 PFA

March, 2010 Dates

March 15 - 19, 2010 Parent Teacher Conference

March , 2010

March , 2010

March 29 - April 2, 2010 Spring Break

**2010 - 2011
 CALENDAR
 OPTIONS INSIDE**

School Board

Rick Hart

Carolyn Mauer

Leann Gilberg

Glen Stephenson

Jennifer Fears

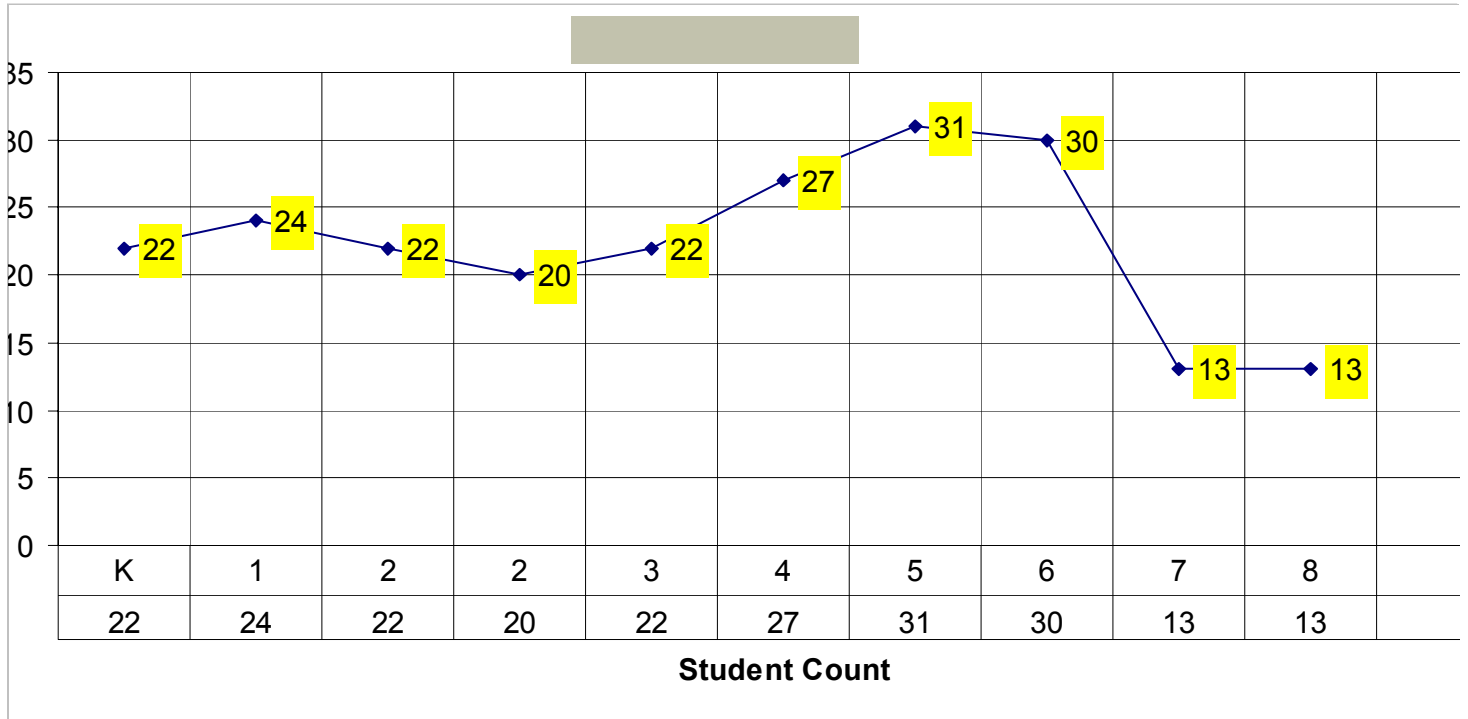
Chris Haechrel

Note: Meeting Date

**School Board Meeting
 Thursday, April 08, 2010
 7:00 pm**

Enrollment and Attendance

Here are the enrollment numbers for the week of March 11– 15 , 2010



Lunchroom Notes



Got Milk?

Milk credit can be purchased at any time from our secretary, Nicole.

9 weeks = \$15.00



ROLLING HILLS ATHLETICS & RECREATION



2009-10 Girls & Boys Track & Field NEWSLETTER 3/15/10



NEW TEAM MEMBERS: It's not too late to JOIN!

We continue to recruit for other Middle School team members this next week. Come to practice and talk to one of our coaches or call May Slaughter at 850-4384 and ask about joining our team.

PRACTICE SCHEDULE UPDATE:

Practice will be held on Tuesdays, Thursdays and Fridays at either the Rolling Hills gym or at Riverglen Junior High (6801 N. Gary Lane, Boise) outdoor track facilities. Special thanks to our Riverglen carpool parents: Nicole Morris (631-8917), Rhonda Clinkscale (629-9940), Monica Player (949-4910) and May Slaughter (850-4384). Parents will pick up their students from Riverglen after those practices. Below is the practice schedule and locations for the rest of the month – practice times are 2:45-4:45 pm unless otherwise indicated:

- | | |
|--|------------------------------------|
| 1) Tuesday, March 16 @Riverglen | 5) Thursday, March 25 @ RH Gym |
| 2) Thursday, March 18 @Riverglen | 6) Friday, March 26 @ RH Gym |
| 3) Friday, March 19 @ Rolling Hills Gym | 7) Spring Break Week – No Practice |
| 4) Tuesday, March 23 @ Riverglen – 5-7 pm* | |

*Please note practice time change to 5-7 pm on March 23rd so parents will need to make personal arrangements/carpool to transport team members to and from Riverglen. During bad weather days (rain, snow, etc. or high winds), practice will be in the Rolling Hills Gym from 2:45-4:45 pm.

CONFERENCE SCHEDULE & CARPOOL: PARENT CARPOOL VOLUNTEERS NEEDED!

We need volunteer parent drivers to help safely transport our team to Horseshoe Bend on 4/8/10 and 4/29/10. Please contact May Slaughter at 850-4384 or email maylaughter@msa.com if you are available to help carpool. Parents will be required to complete a school volunteer form. We plan to lease a bus (24 or 30 passenger coach) for both teams and coaches to travel to the two meets furthest away at Mountain Home and Ontario, Oregon (bus included in the team participation fee – see below). Parents and other family who plan to attend those meets are encouraged to travel by bus with the team at a small cost of \$10 per passenger. Meets may be cancelled due to inclement winter weather but will be rescheduled later.

- 1) 4/8/10: Host - Horseshoe Bend @ HB

Option 1 Meridian School District

August

19	Inservice for teachers new to Harbor Method
20	All new certified Employees Inservice
25	All teachers on duty
30	First Day of School – Full Day

September

6	Labor Day Holiday
---	-------------------

October

7 & 8	State In-service Days – No School
28	End of First Quarter K-8
29	No School Grades K-8 – School In-service

November

3	No School Kindergarten – Parent/Teacher Conference
4&5	No School K-8 Parent Teacher Conferences
22-24	No School K-8 Teacher In-service
25&26	Thanksgiving Vacation

December

20-31	Holiday Break
-------	---------------

January

3	School Resumes
17	No School – MLK Human Rights Day
20	End of Second Quarter K-8
21	No School Grades K-8 Building In-service
21	End of 1 st Semester

February

21	No School K-8 Presidents' Day
----	-------------------------------

March

25	Early Release K-8	End of 3 rd Quarter
28-Apr 1	Spring Break	

April

May

30	Memorial Day Holiday
----	----------------------

June

8	Last Day of school / Early Release Grades K-8
8	End of 2 nd Semester

Option 2 Boise School District

August

19 New teachers on duty
 20 All teachers on duty
 23, 26 School In-service
 30 1st Day of School

September

6 Labor Day Holiday

October

7, 8 State In-service Days – No School for students

November

5 School In-service Day – No school for students
 25-26 Thanksgiving Vacation

December

20-31 Christmas Holiday

January

17 MLK – Human Rights Holiday
 21 End of 1st Semester
 24 School In-service Day – No School for students

February

14 Presidents' Day Holiday

March

March 28 – April 1 Spring Break

April

May

30 Memorial Day

June

3 Last Day of School

Option 3 North Star Charter School

August
 25-27 Teacher In-service days, no school for students
 30 1st full day for students

September
 6 Labor Day Holiday

October
 4-8 Fall Break, school closed
 29 End of 1st Quarter

November
 3 & 4 Parent Teacher Conferences
 5 No School
 22-26 Thanksgiving Break

December
 20-31 Winter Break, school closed

January
 3 School resumes
 17 MLK Human Rights Day, school closed
 21 End of 1st semester

February
 21 President's Day, school closed

March
 18 End of 3rd Quarter
 23-24 Parent Teacher Conferences
 25-April 1 Spring Break, school closed

April
 29 School closed

May
 27 School closed
 30 Memorial Day, school closed

June
 2 End of 2nd Semester
 3 Early release – 12:00 pm; last day of school

Option 5 RHPCS

August

9	Office Opens
23-24	Harbor Training for New Teachers
25	Teacher In-service
26-27	Teacher Work Day
30	First Day of School

September

6	Labor Day
---	-----------

October

7&8	State In-service Days - No School
11-15	Fall Break
29	End of 1 st nine weeks

November

1-4	Parent Teacher Conferences
5	No School
22-26	Thanksgiving Break

December

17	Early Release 12:00 pm
20-31	Winter Break

January

14	End of 1 st Semester
17	MLK – Human Rights Day

February

18	Teacher Inservice
21	Presidents' Day Holiday

March

18	End of 3 rd nine weeks
21-24	Spring Parent Teacher Conferences
25	No School
28-April 1	Spring Break

April

May

27	Last Day of School – Early Release 12:00 pm
27	End of Second Semester
30	Memorial Day

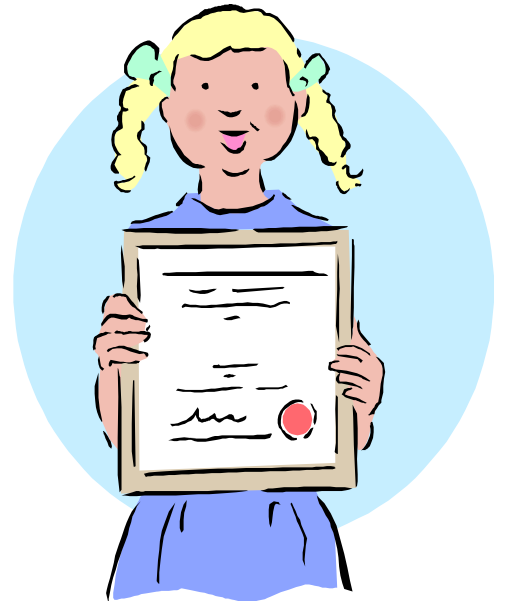
Citizens of the Week

March 12, 2010

Congratulations



**Andrew
Brandon
Grayson
Leah
Riley
Tianna
Zach**



PFA News

Family Nights

Tuesday, January 19 (5 p.m. to 8 p.m.) – Red Robin
 Friday, January 29 (8 p.m. to 9 p.m.) – Wahooz! (tentative)
 Monday, February 1 (3 p.m. to 7 p.m.)– Chuck E Cheese
 Tuesday, February 16 (5 p.m. to 8 p.m.) – Red Robin
 Friday, February 19 (8 p.m. to 9 p.m.) – Wahooz!
 Monday, March 1 (3 p.m. to 7 p.m.) – Chuck E. Cheese
 Tuesday, March 16 (5 p.m. to 7 p.m.)– Red Robin
 Friday, March 26 (8 p.m. to 9 p.m.) – Wahooz! (tentative)
 Monday, April 5 (3 p.m. to 7 p.m.) – Chuck E. Cheese
 Tuesday, April 20 (5 p.m. to 8 p.m.) – Red Robin
 Monday, May 3 (3 p.m. to 7 p.m.) – Chuck E. Cheese
 Tuesday, May 18 (5 p.m. to 8 p.m.) – Red Robin

In addition to these event dates at local businesses, we are also working on scheduling no-cost or low-cost family night events to happen at the school. Watch for more information soon!



Boxtops – Keep sending them in!

Our school collects and submits Box Tops all throughout the year, so keep collecting and sending in those Box Top logos. We just recently received a check for \$413.27 from our Box Top collection drive in the fall. Way to go kids!

What is a BoxTop you ask? A BoxTop is a small logo/certificate (usually tiny) that looks similar to the logo in this section of the newsletter. The logo's can be found on a wide-range of grocery items like cereal boxes, cake mix, refrigerated cookie dough, Ziplock baggies and many more. The certificates need to be torn or cut off the package in one piece and the expiration date must be in the future. Each certificate is worth ten cents for our school.



SCRIP Ordering continues to be available throughout the year!

Order forms are available at the school office and can be downloaded and printed from the school website. Orders are currently being submitted every two weeks. Upcoming SCRIP order form due dates are on the following Mondays: January 18, February 1, February 15, March 1, March 15, and March 29. Your gift cards are returned to you in your child's Friday Folder the Friday of the same week. Remember: gift cards for selected retailers (Carl's Jr., Dominoes, Fred Meyer, Starbucks, Chili's, Macaroni Grill, etc.) are available at the front office. So, be sure to stop in to by that last minute gift or to get your card before a shopping trip!



Christmas Wreaths – One last follow up!

The wreath sales were a great fundraiser for the school. But, as you may remember, we fell just short of selling the minimum number of items required to reach the bonus level to receive an additional \$1.25 bonus per item sold. Here is the awesome news! Jan-Lar Company, the Nampa-based wreath supplier, recognized our efforts and chose to give us the bonus amount on the 225 items we did sell. A HUGE "Thank You!" to Jan-Lar Company for contributing an extra \$281.25 to our school!

Calendar

Note: SPRING BREAK CHANGE

Rolling Hills Public Charter School

2009-2010

August '09

Su	M	Tu	W	Th	F	Sa
						1
2	3	4	5	6	7	8
9	10	11	12	13	14	15
16	17	18	19	20	21	22
23	24	25	26	27	28	29
30	31					

September '09

Su	M	Tu	W	Th	F	Sa
		1	2	3	4	5
6	7	8	9	10	11	12
13	14	15	16	17	18	19
20	21	22	23	24	25	26
27	28	29	30			

October '09

Su	M	Tu	W	Th	F	Sa
				1	2	3
4	5	6	7	8	9	10
11	12	13	14	15	16	17
18	19	20	21	22	23	24
25	26	27	28	29	30	31

November '09

Su	M	Tu	W	Th	F	Sa
1	2	3	4	5	6	7
8	9	10	11	12	13	14
15	16	17	18	19	20	21
22	23	24	25	26	27	28
29	30					

December '09

Su	M	Tu	W	Th	F	Sa
		1	2	3	4	5
6	7	8	9	10	11	12
13	14	15	16	17	18	19
20	21	22	23	24	25	26
27	28	29	30	31		

January '10

Su	M	Tu	W	Th	F	Sa
					1	2
3	4	5	6	7	8	9
10	11	12	13	14	15	16
17	18	19	20	21	22	23
24	25	26	27	28	29	30
31						

February '10

Su	M	Tu	W	Th	F	Sa
	1	2	3	4	5	6
7	8	9	10	11	12	13
14	15	16	17	18	19	20
21	22	23	24	25	26	27
28						

March '10

Su	M	Tu	W	Th	F	Sa
	1	2	3	4	5	6
7	8	9	10	11	12	13
14	15	16	17	18	19	20
21	22	23	24	25	26	27
28	29	30	31			

April '10

Su	M	Tu	W	Th	F	Sa
				1	2	3
4	5	6	7	8	9	10
11	12	13	14	15	16	17
18	19	20	21	22	23	24
25	26	27	28	29	30	

May '10

Su	M	Tu	W	Th	F	Sa
						1
2	3	4	5	6	7	8
9	10	11	12	13	14	15
16	17	18	19	20	21	22
23	24	25	26	27	28	29
30	31					

August 31, 2009	First Day of School	
September 7, 2009	Labor Day	
October 5-9, 2009	Fall Break	
October 30, 2009	End of 1 st Nine Weeks	
November 23-27, 2009	Thanksgiving Break	
December 21 – January 1, 2010	Winter Break	
January 15, 2010	End of 2 nd Nine Weeks / End of 1 st Semester	
January 18, 2010	Martin Luther King Holiday	
February 12, 2010	Teacher In-Service Day (No School)	
February 15, 2010	President's Holiday	
March 19, 2010	End of 3 rd Nine Weeks	
March 28 – April 2, 2010	Spring Break	
May 28, 2009	Last Day Of School	
Parent Teacher Conferences	(Fall) November 2 - 6, 2009	(Spring) March 15 – 19, 2010