

Rolling Hills Public Charter School  
*Monday Notes - Monday, March 22, 2010*

**March 29 - April 2, 2010 Spring Break**

**April 13 - Kindergarten Registration**  
**3:00 pm - 5:00 pm**

**April 15 - Open House**  
**3 Sessions / 6:30 pm, 7:00 pm, 7:30 pm**

**April 17 - Lottery / 8:00 am**

**RHPCS Calendar Notes**

**Calendar**

Monday, March 22

Tuesday, March 23

Wednesday, March 24

Thursday, March 25

Friday, March 26

**March, 2010 Dates**

March, 2010

March, 2010

March 29 - April 2, 2010      **Spring Break**

**2010 - 2011  
 CALENDAR  
 OPTIONS INSIDE**

**School Board**

Rick Hart

Carolyn Mauer

Leann Gilberg

Glen Stephenson

Jennifer Fears

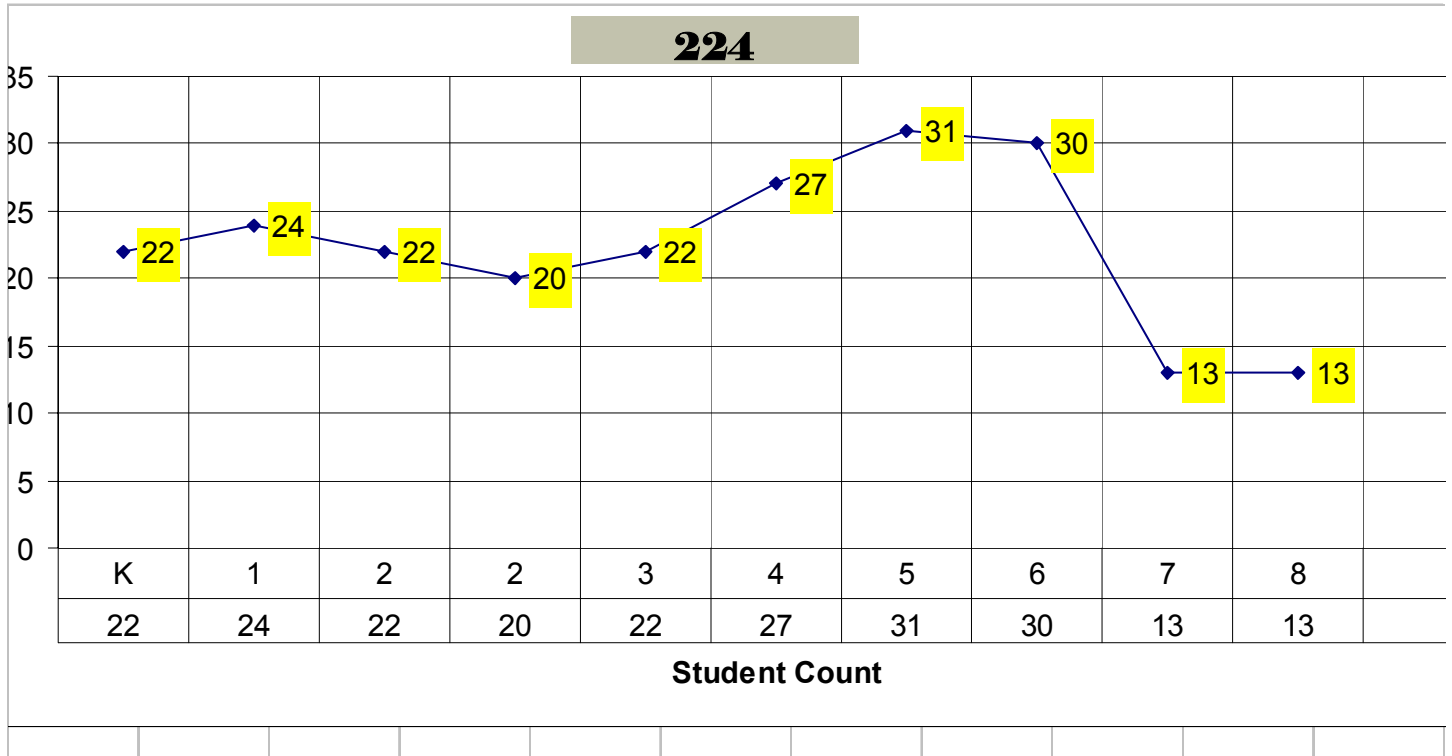
Chris Haechrel

*Note: Meeting Date*

**School Board Meeting**  
**Thursday, April 08, 2010**  
**7:00 pm**

# Enrollment and Attendance

Here are the enrollment numbers for the week of March 15 - 19, 2010



## Lunchroom Notes



### Got Milk?

Milk credit can be purchased at any time from our secretary, Nicole.

9 weeks = \$15.00

# PFA

RHPCS Families;

I hope you enjoyed the "MOVIE NIGHT" on Friday. We continue to have a great family turn-out. I, also, wanted to take a moment to remind all of you about our newest addition to "Family Night". Fiesta Guadalajara is a wonderful and very reasonably priced Mexican restaurant located at the corner of Chinden & Eagle. They will give the school 25% of each receipt, which is the best percentage so far. I hope to see everyone there. It will be Thursday, March 25th from 5:00 - 8:00 pm.

See you there!

Catherine Moore  
PFA President

# RHPCS Athletics

Attached is this week's newsletter. Please note that Riverglen practice will be at 5-7 pm from now until the end of the season. Riverglen Junior High Track/Field and Capital High Lacrosse seasons have started so the practice facilities are only open for us to utilize some evenings. If you need a carpool to/from Riverglen in the evening, please email me and I will connect you with other team parents that may be able to help.

---

## **TEAM PARTICIPATION FEE – Due By This Friday, March 26, 2010:**

To help defer part of the cost of transportation (busing to games a considerable distance away), equipment, maintenance, and jerseys, we ask families to pay **\$30 per team member** for the season. Please put in the Athletic Program mailbox (attach note with student's name). Checks can be payable to RHPCS. If a family requires assistance to cover this fee, please contact May Slaughter at [mayslaughter@msn.com](mailto:mayslaughter@msn.com) or 850-4384.

## **PRACTICE SCHEDULE UPDATE:**

Practice will be held on Tuesdays, Thursdays and Fridays at either the Rolling Hills gym or at Riverglen Junior High (6801 N. Gary Lane, Boise) outdoor track facilities. Parents will pick up their students from Riverglen after those practices. Below is the practice schedule for the next 3 weeks – practice times are 2:45-4:45 pm unless otherwise indicated:

**Tuesday, March 23 @ Riverglen 5-7 pm**  
 Thursday, March 25 @ RH Gym  
 Friday, March 26 @ RH Gym  
 Spring Break Week – No Practice  
 Tuesday, April 6 @ RH Gym  
 Thursday, April 8 – Meet @ HSB  
**Friday, April 9 @ Riverglen 5-7 pm**



# ROLLING HILLS ATHLETICS & RECREATION



## 2009-10 Girls & Boys Track & Field NEWSLETTER 3/15/10



### NEW TEAM MEMBERS: It's not too late to JOIN!

We continue to recruit for other Middle School team members this next week. Come to practice and talk to one of our coaches or call May Slaughter at 850-4384 and ask about joining our team.

### PRACTICE SCHEDULE UPDATE:

Practice will be held on Tuesdays, Thursdays and Fridays at either the Rolling Hills gym or at Riverglen Junior High (6801 N. Gary Lane, Boise) outdoor track facilities. Special thanks to our Riverglen carpool parents: Nicole Morris (631-8917), Rhonda Clinkscale (629-9940), Monica Player (949-4910) and May Slaughter (850-4384). Parents will pick up their students from Riverglen after those practices. Below is the practice schedule and locations for the rest of the month – practice times are 2:45-4:45 pm unless otherwise indicated:

- |                                            |                                    |
|--------------------------------------------|------------------------------------|
| 1) Tuesday, March 16 @Riverglen            | 5) Thursday, March 25 @ RH Gym     |
| 2) Thursday, March 18 @Riverglen           | 6) Friday, March 26 @ RH Gym       |
| 3) Friday, March 19 @ Rolling Hills Gym    | 7) Spring Break Week – No Practice |
| 4) Tuesday, March 23 @ Riverglen – 5-7 pm* |                                    |

\*Please note practice time change to 5-7 pm on March 23<sup>rd</sup> so parents will need to make personal arrangements/carpool to transport team members to and from Riverglen. During bad weather days (rain, snow, etc. or high winds), practice will be in the Rolling Hills Gym from 2:45-4:45 pm.

### CONFERENCE SCHEDULE & CARPOOL: PARENT CARPOOL VOLUNTEERS NEEDED!

We need volunteer parent drivers to help safely transport our team to Horseshoe Bend on 4/8/10 and 4/29/10. Please contact May Slaughter at 850-4384 or email [may@slaughter@msm.com](mailto:may@slaughter@msm.com) if you are available to help carpool. Parents will be required to complete a school volunteer form. We plan to lease a bus (24 or 30 passenger coach) for both teams and coaches to travel to the two meets furthest away at Mountain Home and Ontario, Oregon (bus included in the team participation fee – see below). Parents and other family who plan to attend those meets are encouraged to travel by bus with the team at a small cost of \$10 per passenger. Meets may be cancelled due to inclement winter weather but will be rescheduled later.

- 1) 4/8/10: Host - Horseshoe Bend @ HB

## **Option 1 Meridian School District**

### **August**

19	Inservice for teachers new to Harbor Method
20	All new certified Employees Inservice
25	All teachers on duty
30	First Day of School – Full Day

### **September**

6	Labor Day Holiday
---	-------------------

### **October**

7 & 8	State In-service Days – No School
28	End of First Quarter K-8
29	No School Grades K-8 – School In-service

### **November**

3	No School Kindergarten – Parent/Teacher Conference
4&5	No School K-8 Parent Teacher Conferences
22-24	No School K-8 Teacher In-service
25&26	Thanksgiving Vacation

### **December**

20-31	Holiday Break
-------	---------------

### **January**

3	School Resumes
17	No School – MLK Human Rights Day
20	End of Second Quarter K-8
21	No School Grades K-8 Building In-service
21	End of 1 <sup>st</sup> Semester

### **February**

21	No School K-8 Presidents' Day
----	-------------------------------

### **March**

25	Early Release K-8	End of 3 <sup>rd</sup> Quarter
28-Apr 1	Spring Break	

### **April**

### **May**

30	Memorial Day Holiday
----	----------------------

### **June**

8	Last Day of school / Early Release Grades K-8
8	End of 2 <sup>nd</sup> Semester

## **Option 2    Boise School District**

### **August**

19            New teachers on duty  
 20            All teachers on duty  
 23, 26        School In-service  
 30            1<sup>st</sup> Day of School

### **September**

6            Labor Day Holiday

### **October**

7, 8            State In-service Days – No School for students

### **November**

5            School In-service Day – No school for students  
 25-26        Thanksgiving Vacation

### **December**

20-31        Christmas Holiday

### **January**

17            MLK – Human Rights Holiday  
 21            End of 1<sup>st</sup> Semester  
 24            School In-service Day – No School for students

### **February**

14            Presidents' Day Holiday

### **March**

March 28 – April 1    Spring Break

### **April**

### **May**

30            Memorial Day

### **June**

3            Last Day of School

## **Option 3 North Star Charter School**

**August**  
 25-27 Teacher In-service days, no school for students  
 30 1<sup>st</sup> full day for students

**September**  
 6 Labor Day Holiday

**October**  
 4-8 Fall Break, school closed  
 29 End of 1<sup>st</sup> Quarter

**November**  
 3 & 4 Parent Teacher Conferences  
 5 No School  
 22-26 Thanksgiving Break

**December**  
 20-31 Winter Break, school closed

**January**  
 3 School resumes  
 17 MLK Human Rights Day, school closed  
 21 End of 1<sup>st</sup> semester

**February**  
 21 President's Day, school closed

**March**  
 18 End of 3<sup>rd</sup> Quarter  
 23-24 Parent Teacher Conferences  
 25-April 1 Spring Break, school closed

**April**  
 29 School closed

**May**  
 27 School closed  
 30 Memorial Day, school closed

**June**  
 2 End of 2<sup>nd</sup> Semester  
 3 Early release – 12:00 pm; last day of school

## **Option 4    Compass Charter School**

<b>August</b>	
<b>16</b>	<b>First Day of School</b>
<b>September</b>	
<b>6</b>	<b>Labor Day</b>
<b>October</b>	
<b>7&amp;8</b>	<b>State In-service Days</b>
<b>11-15</b>	<b>Fall Break</b>
<b>November</b>	
<b>22-26</b>	<b>Thanksgiving Break</b>
<b>December</b>	
<b>17</b>	<b>Early Release</b>
<b>20-Jan7</b>	<b>Winter Break</b>
<b>January</b>	
<b>17</b>	<b>MLK – Human Rights Day</b>
<b>February</b>	
<b>18</b>	<b>Teacher In-service</b>
<b>21</b>	<b>Presidents’ Day Holiday</b>
<b>March</b>	
<b>28-April 1</b>	<b>Spring Break</b>
<b>April</b>	
<b>May</b>	
<b>30</b>	<b>Memorial Day</b>
<b>June</b>	
<b>3</b>	<b>Early Release, Last Day of school</b>

## **Option 5 RHPCS**

### **August**

9	Office Opens
23-24	Harbor Training for New Teachers
25	Teacher In-service
26-27	Teacher Work Day
30	First Day of School

### **September**

6	Labor Day
---	-----------

### **October**

7&8	State In-service Days - No School
11-15	Fall Break
29	End of 1 <sup>st</sup> nine weeks

### **November**

1-4	Parent Teacher Conferences
5	No School
22-26	Thanksgiving Break

### **December**

17	Early Release 12:00 pm
20-31	Winter Break

### **January**

14	End of 1 <sup>st</sup> Semester
17	MLK – Human Rights Day

### **February**

18	Teacher Inservice
21	Presidents' Day Holiday

### **March**

18	End of 3 <sup>rd</sup> nine weeks
21-24	Spring Parent Teacher Conferences
25	No School
28-April 1	Spring Break

### **April**

### **May**

27	Last Day of School – Early Release 12:00 pm
27	End of Second Semester
30	Memorial Day

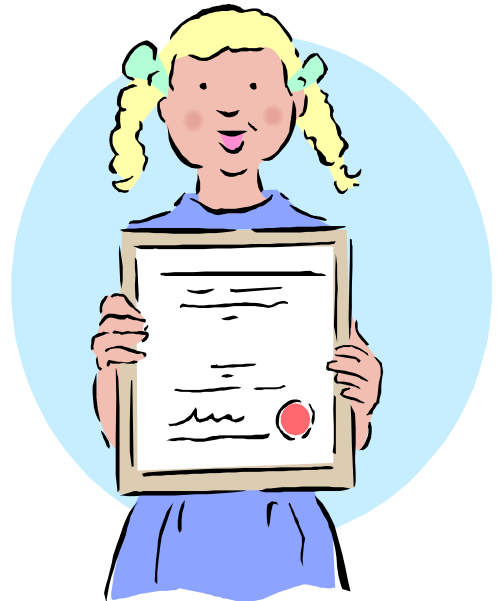
# Citizens of the Week

## March 19, 2010

### Congratulations



**Britnei  
Autumn  
Sierra  
Josie  
Riley  
Emilee  
Chazz**



# PFA News

## Family Nights

Tuesday, January 19 (5 p.m. to 8 p.m.) – Red Robin  
 Friday, January 29 (8 p.m. to 9 p.m.) – Wahooz! (tentative)  
 Monday, February 1 (3 p.m. to 7 p.m.)– Chuck E Cheese  
 Tuesday, February 16 (5 p.m. to 8 p.m.) – Red Robin  
 Friday, February 19 (8 p.m. to 9 p.m.) – Wahooz!  
 Monday, March 1 (3 p.m. to 7 p.m.) – Chuck E. Cheese  
 Tuesday, March 16 (5 p.m. to 7 p.m.)– Red Robin  
 Friday, March 26 (8 p.m. to 9 p.m.) – Wahooz! (tentative)  
 Monday, April 5 (3 p.m. to 7 p.m.) – Chuck E. Cheese  
 Tuesday, April 20 (5 p.m. to 8 p.m.) – Red Robin  
 Monday, May 3 (3 p.m. to 7 p.m.) – Chuck E. Cheese  
 Tuesday, May 18 (5 p.m. to 8 p.m.) – Red Robin

In addition to these event dates at local businesses, we are also working on scheduling no-cost or low-cost family night events to happen at the school. Watch for more information soon!



### Boxtops – Keep sending them in!

Our school collects and submits Box Tops all throughout the year, so keep collecting and sending in those Box Top logos. We just recently received a check for \$413.27 from our Box Top collection drive in the fall. Way to go kids!

**What is a BoxTop you ask?** A BoxTop is a small logo/certificate (usually tiny) that looks similar to the logo in this section of the newsletter. The logo's can be found on a wide-range of grocery items like cereal boxes, cake mix, refrigerated cookie dough, Ziplock baggies and many more. The certificates need to be torn or cut off the package in one piece and the expiration date must be in the future. Each certificate is worth ten cents for our school.



### SCRIP Ordering continues to be available throughout the year!

Order forms are available at the school office and can be downloaded and printed from the school website. Orders are currently being submitted every two weeks. Upcoming SCRIP order form due dates are on the following Mondays: January 18, February 1, February 15, March 1, March 15, and March 29. Your gift cards are returned to you in your child's Friday Folder the Friday of the same week. Remember: gift cards for selected retailers (Carl's Jr., Dominoes, Fred Meyer, Starbucks, Chili's, Macaroni Grill, etc.) are available at the front office. So, be sure to stop in to by that last minute gift or to get your card before a shopping trip!



### Christmas Wreaths – One last follow up!

The wreath sales were a great fundraiser for the school. But, as you may remember, we fell just short of selling the minimum number of items required to reach the bonus level to receive an additional \$1.25 bonus per item sold. Here is the awesome news! Jan-Lar Company, the Nampa-based wreath supplier, recognized our efforts and chose to give us the bonus amount on the 225 items we did sell. A HUGE "Thank You!" to Jan-Lar Company for contributing an extra \$281.25 to our school!

